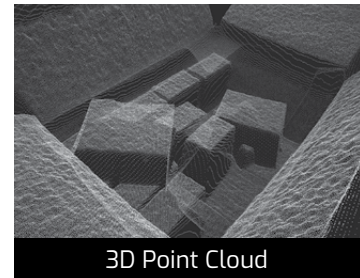
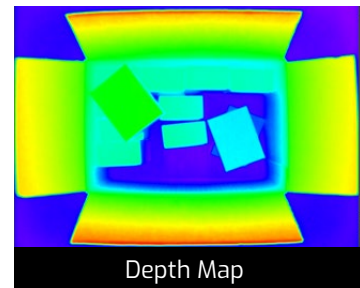


Helios™ Embedded

Time-Of-Flight (ToF) Camera with Sony DepthSense for NVIDIA® JETSON™ TX2



3D Point Cloud



Depth Map



Original Scene

Preliminary Specifications

| Model | MP | Resolution | FPS | Sensor | Format | Pixel Size | Lens Mount | Output | Interface |
|---------------------|--------|------------|--------|---------------------------------|--------|------------|--------------------|--|------------|
| Helios ToF Embedded | 0.3 MP | 640x480 px | 30 fps | Sony DepthSense™ IMX556PLR CMOS | 1/2" | 10 µm | Integrated S-Mount | 3D Point Cloud, Intensity and Confidence | MIPI (FFC) |

Physical, Interface, and Power Information

| | |
|-------------------|---|
| Digital Interface | 4-Lane MIPI D-PHY CSI-2 (FFC) |
| Dimension | 55 x 55 x 43.7 mm |
| Lens Mount | Integrated S-mount lens with 6mm focal length (not user changeable) |
| Weight | 107 g |
| Power Consumption | < 15 w |

Imaging Properties

| | |
|--------------------|---|
| Working Range | Near Mode: up to 1.5m Far Mode: up to 6m |
| Accuracy | Less than 5mm (0.3m to 1.5m) |
| Precision | Less than 2mm at 1m |
| Lens Field of View | 59° x 45° (nominal) |
| Illumination | 4 x VCSEL laser diodes @ 850nm |

Standard and Certifications

| | |
|-----------------------|---|
| Compliance | CE, FCC, RoHS, REACH, WEEE, Eye Safety Class I IEC 60825-1:2014 |
| Operating Temperature | -10° C to 60° C case temperature |

Camera Features

| | |
|------------------|---|
| Exposure Control | Manual |
| Output Formats | 3D Point Cloud, Intensity and Confidence |
| Platform Support | NVIDIA Jetson TX2 Contact LUCID for other platform support |

What's Included

- Helios Embedded
- Camera adapter board
- FFC cable
- Power cable from camera board to Helios
- AC power adapter
- Software driver, SDK (GPU accelerated library) and sample source codes.



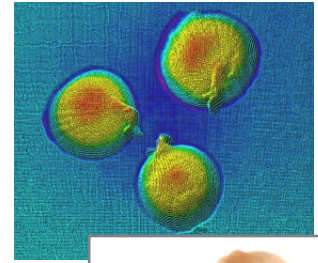
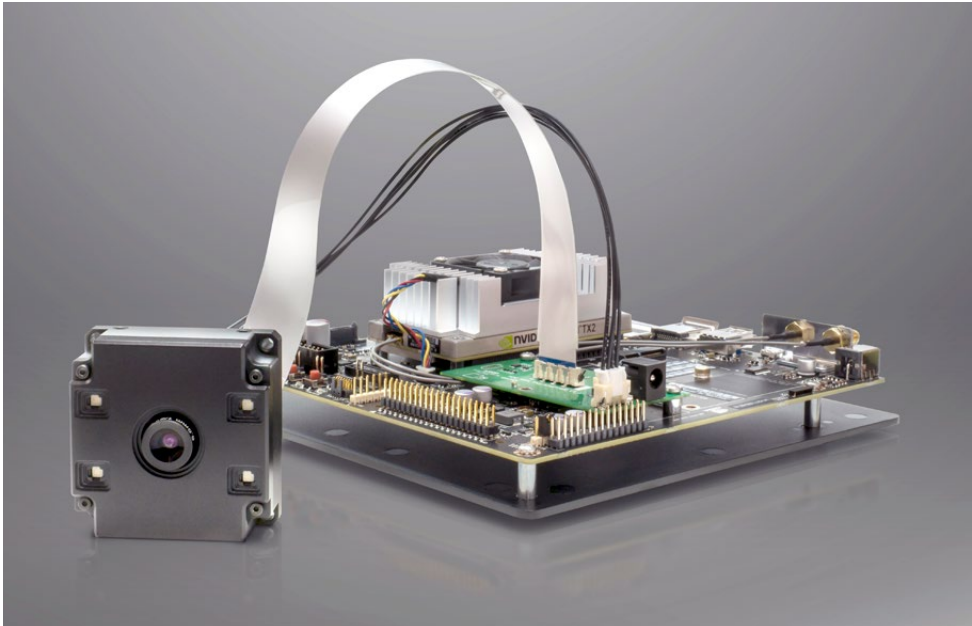
sales@thinklucid.com
www.thinklucid.com

© 2019 LUCID Vision Labs, Incorporated. All rights reserved. Phoenix, Triton, Arena, ArenaView and other names and marks appearing on the products herein are either registered trademarks or trademarks of Lucid Vision Labs, Inc. and/or its subsidiaries. Subject to change without notice. Ver 1.4 5/03/2019

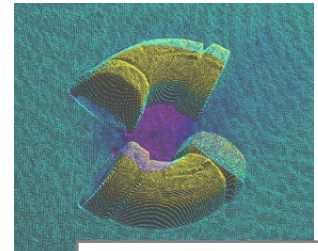
Preliminary Specifications

Helios™ Embedded

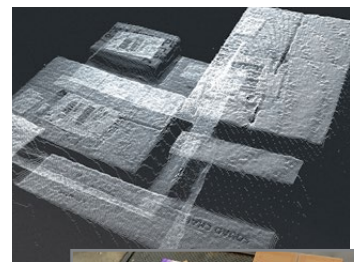
Time-Of-Flight (ToF) Camera with Sony DepthSense for NVIDIA® JETSON™ TX2



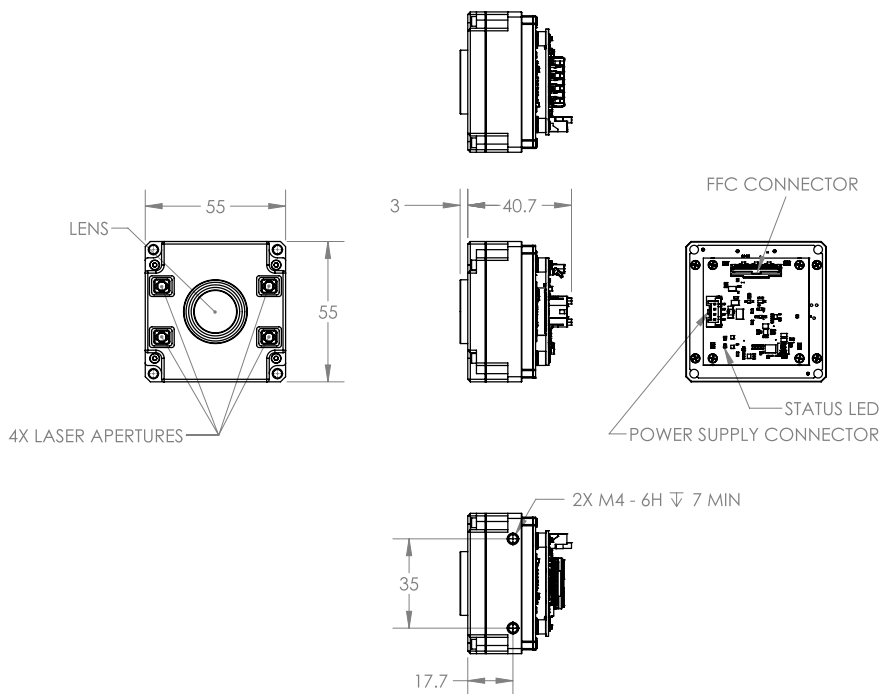
Onions



White PVC pipes



Boxes on pallet



Preliminary Specifications



sales@thinklucid.com
www.thinklucid.com

© 2019 LUCID Vision Labs, Incorporated. All rights reserved. Phoenix, Triton, Arena, ArenaView and other names and marks appearing on the products herein are either registered trademarks or trademarks of Lucid Vision Labs, Inc. and/or its subsidiaries. Subject to change without notice. Ver 1.4 5/03/2019