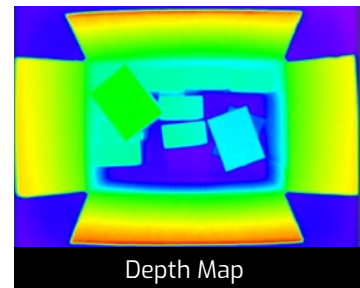
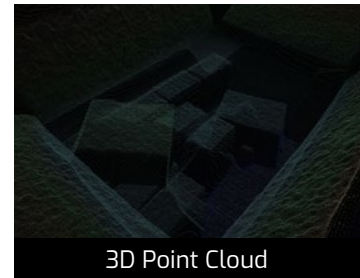


Helios™ Flex



Time-Of-Flight (ToF) Camera with Sony DepthSense for NVIDIA® JETSON™ TX2



Preliminary Specifications

Model	MP	Resolution	FPS	Sensor	Format	Pixel Size	Lens Mount	Output	Interface
Helios FLEX	0.3 MP	640x480 px	60 fps	Sony DepthSense™ IMX556PLR CMOS	1/2"	10 µm	Integrated S-Mount	3D Point Cloud, Intensity and Confidence	MIPI (FFC)

Physical, Interface, and Power Information

Digital Interface	4-Lane MIPI D-PHY CSI-2 (FFC)
Dimension	55 x 55 x 43.7 mm
Lens Mount	Integrated S-mount lens with 6mm focal length (not user changeable)
Weight	107 g
Power Consumption	< 15 w

Imaging Properties

Working Range	Near Mode: up to 1.5m Far Mode: up to 6m
Accuracy	Less than 5mm (0.3m to 1.5m)
Precision	Less than 2mm at 1m
Lens Field of View	59° x 45° (nominal)
Illumination	4 x VCSEL laser diodes @ 850nm

Standard and Certifications

Compliance	CE, FCC, RoHS, REACH, WEEE, Eye Safety Class I IEC 60825-1:2014
Operating Temperature	-10° C to 60° C case temperature

Camera Features

Exposure Control	Manual
Output Formats	3D Point Cloud, Intensity and Confidence
Platform Support	NVIDIA Jetson TX2 Contact LUCID for other platform support

What's Included

- Helios Embedded
- Camera adapter board
- FFC cable
- Power cable from camera board to Helios
- AC power adapter
- Software driver, SDK (GPU accelerated library) and sample source codes.



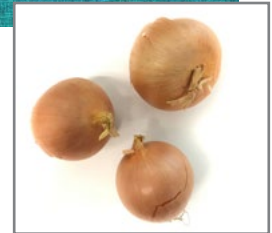
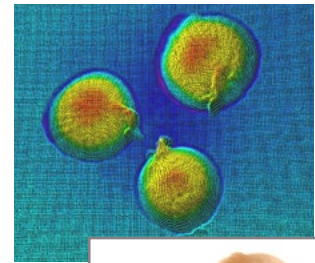
sales@thinklucid.com
www.thinklucid.com

© 2019 LUCID Vision Labs, Incorporated. All rights reserved. Phoenix, Triton, Arena, ArenaView and other names and marks appearing on the products herein are either registered trademarks or trademarks of Lucid Vision Labs, Inc. and/or its subsidiaries. Subject to change without notice. Ver 1.4 5/03/2019

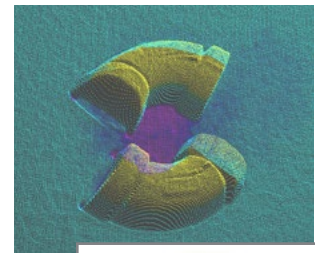
Preliminary Specifications

Helios™ Flex

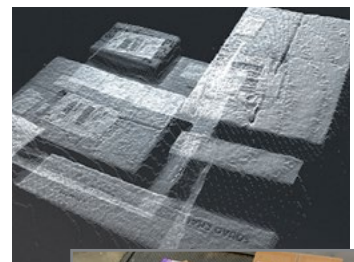
Time-Of-Flight (ToF) Camera with Sony DepthSense for NVIDIA® JETSON™ TX2



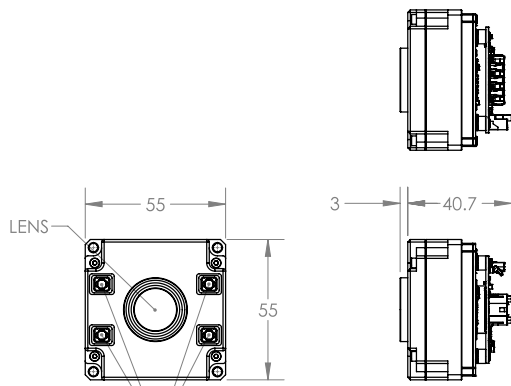
Onions



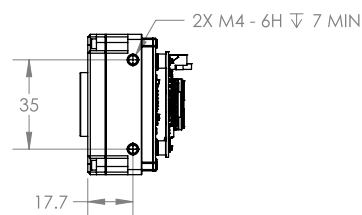
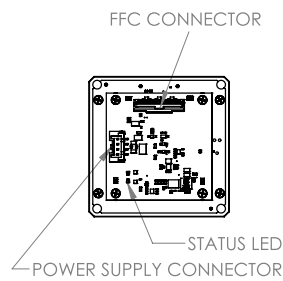
White PVC pipes



Boxes on pallet



4X LASER APERTURES



Preliminary Specifications



sales@thinklucid.com
www.thinklucid.com

© 2019 LUCID Vision Labs, Incorporated. All rights reserved. Phoenix, Triton, Arena, ArenaView and other names and marks appearing on the products herein are either registered trademarks or trademarks of Lucid Vision Labs, Inc. and/or its subsidiaries. Subject to change without notice. Ver 1.4 5/03/2019